

Building Type : Mixed use
Climate Zone : Composite
Area : 7333.3 m²
Conditioned Area: 5250 m²
WWR : 14.7%
Occupancy Type : 24 hours
ECBC Compliance: Prescriptive Method
(**ECBC 2007**)

HVAC

BEE 5 star rated split AC

Piping and ductwork

System Description: 20 mm thick Nitrile Rubber
R value: 1.4, R value of insulation: 0.35,
Thickness of insulation 13 mm.

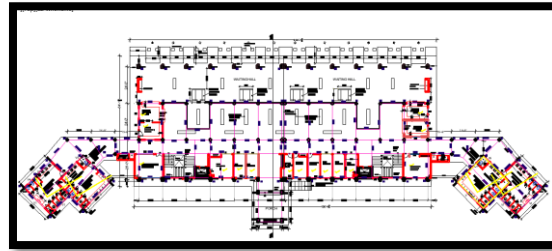
Air leakage

Envelope is sealed, caulked, gasket or weather-stripped.

Exterior Lighting Details

LED Fixtures with minimum efficacy of 80 lumens/watt.

12 Bays Bus Stand, Fatehabad (Haryana)



PROJECT SUMMARY

The building is four storied which contains waiting hall, shops, offices, dormitories, waiting rooms and other general facilities. The longer axis of the building is East-West oriented.

Building Envelope

Opaque wall : 12 mm Plaster + 115 mm bricks + 75mm rock wool + 230 mm bricks + 12 mm Plasters

U-value: 0.399 W/ m²K

Assembly thickness : 444 mm:

Roof Assembly: 8 mm tiles + 50 mm Cement screed+75 mm XPS insulation + 100mm RCC + 12 mm Cement Plaster

U-value: 0.256 W/ m²K

Assembly thickness : 245 mm

Glazing type 1 DGU(Double Glazed Unit)

U-value: 1.7 W/ m²K, SHGC: 0.27, VLT: 38%

Glazing type Single Glazed Unit)

U-value: 5.4 W/ m²K, SHGC: 0.5, VLT: 29%.

Lighting Power Density

Space Function Method

Bedroom / Drawing Room: 9 W/ m²

Shop/clock room :16 W/ m²

Toilets : 8 W/ m²

Waiting hall : 4 W/ m²

Ticket counter : 14 W/ m²

Dormitories : 10 W/ m²

Fixtures - LED Bulbs

Occupancy Sensors - in corridors, toilets, offices and conference rooms

